

V3500-32G

L3 Managed 24-Port Gigabit Ethernet Switch

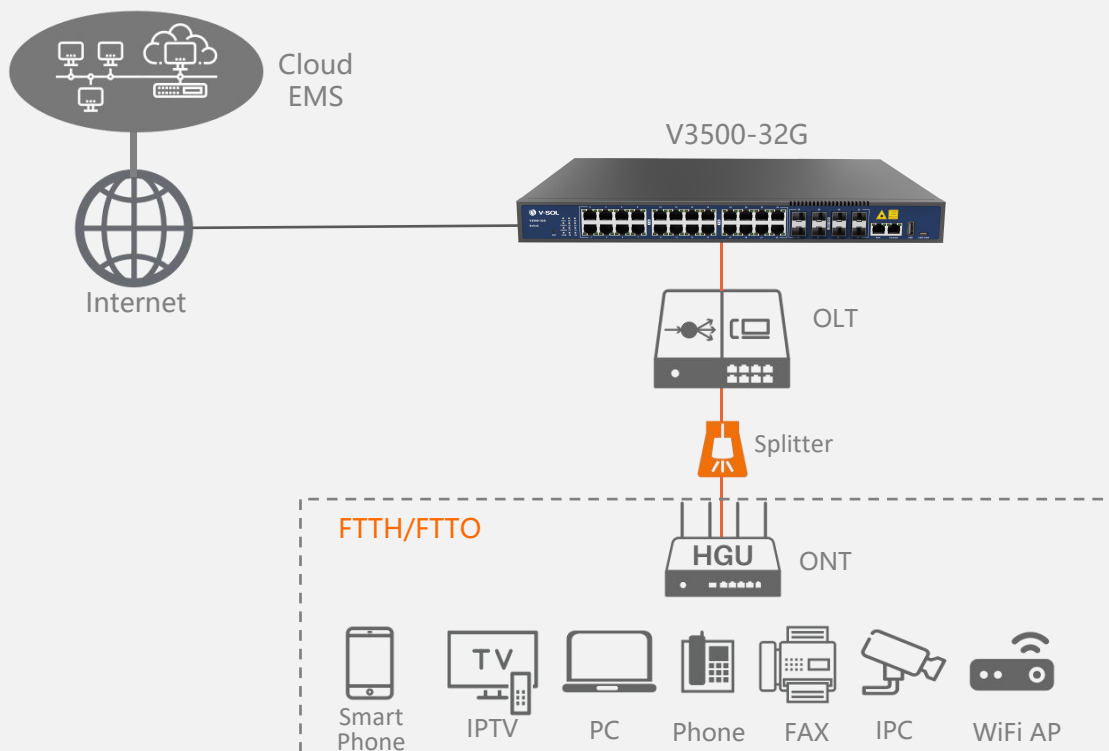
Key Features:

- Rich business functions: RIP/OSPF/IPv6
- Power backup
- Easy to manage and friendly interface
- WebUI & Logo DIY

Introduction:

VSOL's independently developed V3500-32G is a 24-port gigabit box-type switch. It provides 24 GE ports and 8 GE/10GE SFP+ ports on the user side, supporting Layer 3 routing as well as RIP/OSPF/IPv6 protocols. Boasting high performance, a compact size, user-friendliness and flexible operation, the switch features simple deployment, meeting the requirements for device performance and dimensions in compact equipment rooms. When used in conjunction with OLT products, it fulfills the needs of access networks and enterprise networks for enhanced performance, improved reliability and reduced power consumption. It is widely applicable to scenarios such as broadcast TV triple-play networks, FTTP (Fiber to the Premise), video surveillance networks, enterprise LANs (Local Area Networks) and the Internet of Things (IoT).

Application Scenarios



V3500-32G

L3 Managed 24-Port Gigabit Ethernet Switch

Technical Specifications:

Management Ports

- 1*10/100BASE-T out-band port
- 1*CONSOLE port
- 1*USB 2.0 port
- 1*USB-COM port

High Reliability & Safety

- Dual power backup
- Static/LACP link aggregation
- Support L2/L3/L4-based ACL flow identification and filtering security mechanism
- Support port isolation
- Support SYN Flood of TCP attacks and UDP Flood attacks
- DHCP Snooping, DHCP Option 82
- Command line hierarchical protection

Management Mode

- SNMP/Telnet/CLI/WEB/SSHv2
- Support TFTP to Upload & Download File
- CLI command style similar to mainstream manufacturers

Management Function

- Fan Group Control
- Port Status monitoring and configuration management
- User management
- Alarm management
- Logo DIY

Layer2 Switch

- 16K Mac address
- Support 4096 VLANs
- Support port VLAN and protocol VLAN
- Support VLAN tag/Un-tag ,VLAN transparent transmission
- Support VLAN translation and QinQ
- Support storm control based on port
- Support port isolation
- Support port rate limitation
- Support 802.1D and 802.1W
- Support static LACP
- QoS based on port, VID, TOS and MAC address
- Access control list
- IEEE802.x flow control
- Port stability statistic and monitoring

Multicast

- IGMP v1/v2, IGMP Snooping,IGMP Fast Leave
- Multicast group quantitative limitation
- Multicast Traffic cross-VLAN replication

IPv6

- Support IPv6 SNMP/Telnet/Https
- Support IPv6 neighbor discovery, stateless address auto configuration,IPv6 access control list
- Support MLD v1/v2,MLD Snooping

DHCP

- DHCP server/DHCP relay/DHCP snooping

Layer 3

- ARP proxy
- Static route,1024 hardware Host Routes,512 hardware Subnet Routes
- RIPv1/v2, OSPFv2

Item		V3500-32G
Chassis	Rack	1U 19 inch standard box
Gigabit Ethernet port	QTY	24
	Physical Interface	RJ45
	Forward Rate	1000Mbps
10G Uplink Port	QTY	8
	Physical Interface	SFP(GE)/SFP+(10GE)
	Forward Rate	10Gbps
Management Port		1 * 10/100/1000M BASE-T external management network port, 1 * CONSOLE port, 1 * USB-COM port, 1 * USB2.0 port
Switching Capacity (Gbps)		208
Throughput (Mpps)		192
Dimension (LxWxH)		442*285.2*43.6mm
Weight		3.85kg
Power Voltage	AC	Working Voltage Range: 100~240V, Rated Voltage: 110V/220V
	DC	Working Voltage Range: -36~-75V, Rated Voltage: -48V/-60V
Power Consumption		37W
Surge Protection		Common Mode (CM): 4KV Electrostatic Discharge (ESD): Air Discharge 8KV, Contact Discharge 4KV
Operating Environment	Working Temperature	-20~+60°C
	Storage Temperature	-40~+70°C
	Relative Humidity	5~95% (non-condensing)

Ordering Information:

Product Name	Product Description	Power Configuration	Accessories
V3500-32G	24*GE(RJ45) + 8*10GE/GE(SFP+)	1*AC power 2*AC power 2*DC power 1*AC power + 1* DC power	1G SFP module 10G SFP+ module